



Prosurv CE



Allegro CE Installation And Quick-Start Guide

Contact Information

Prosurv, LLC
185 Louis L'amour Lane
Clark, WY 82435

Toll-free 888-647-9500
Web site: www.prosurv.com
E-mail: sales@prosurv.com
techsupport@prosurv.com



Prosurv CE Installation and Quick Start Guide for Allegro CE

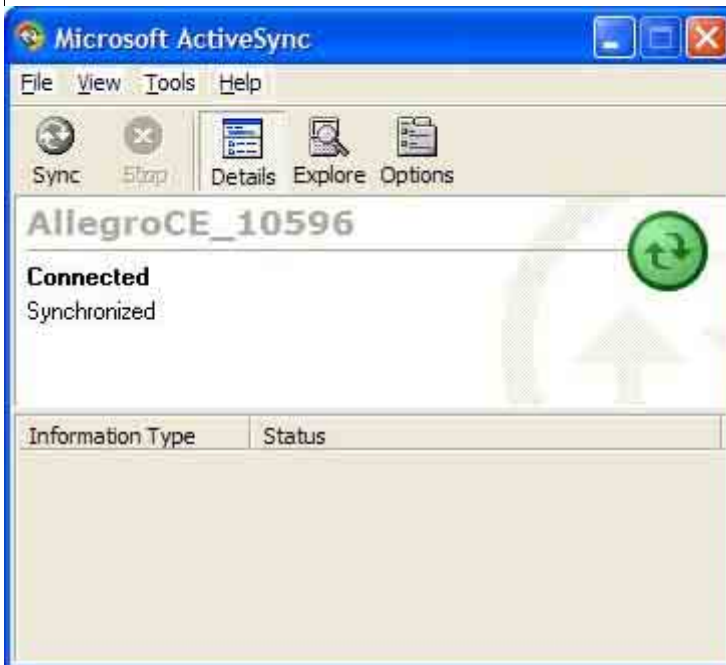
Installing Prosurv CE to the Allegro CE **Important Notes**

- Installation of Prosurv CE is done through your PC
- Be sure that you have installed ActiveSync on your PC (version 3.0 or later), and that communication between your Allegro and PC has been established through ActiveSync (ie a partnership has been established)
- ActiveSync should display that the Allegro is ‘synchronized’
- Extract your Prosurv CE Installation files to a new folder on your PC

Important:

1. Prosurv CE requires a 64MB RAM Allegro or above. If your Allegro does not have at least 64MB of on-board RAM memory (not storage memory), then Prosurv CE will not function properly, and may not install.
2. Be sure that you install Prosurv CE to a ‘clean’ Allegro. If another program (ie survey DC program) exists on the device, you must uninstall that program before installing Prosurv CE. It is recommended that you perform a System Restore, found in Start—>Programs—>Utilities—>Restore System on your Allegro CE.

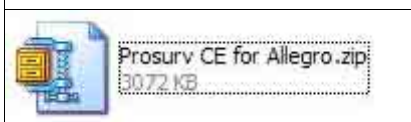
Step 1: Establish a PC Connection With Your Allegro CE



Before you begin, your ActiveSync connection with your Allegro CE should resemble the picture to the left.

If you do not see “Connected” and “Synchronized”, please read the Allegro CE installation guide, or refer to the Microsoft ActiveSync documentation.

Step 2: Extract Files From *Prosurv CE for Allegro Installation.zip*



Extract the files in *Prosurv CE for Allegro.zip* to a new folder on your PC.

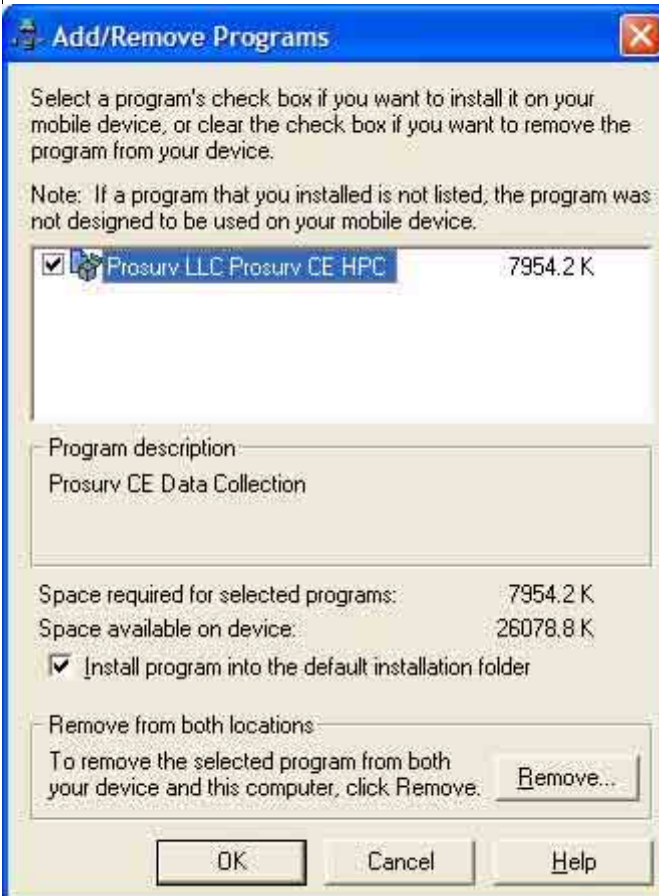
Prosurv CE Installation and Quick Start Guide for Allegro CE



Your folder should now contain the files shown on the left.

Step 3: Install Prosurv CE

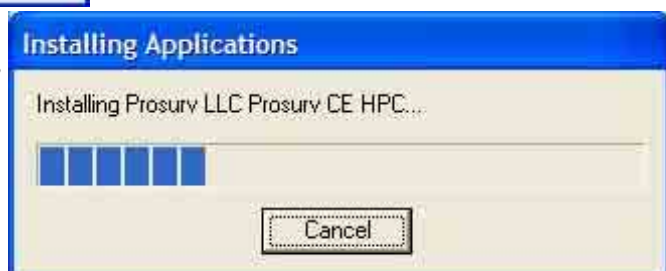
You can view the ReadMe.txt file for the latest installation and version information for Prosurv CE. Then double-click the **Installer.exe** file to begin the installation. **Important: Do not click on any of the other included files.**



Double-clicking the Installer.exe file will activate the window shown on the left. You should see “Prosurv LLC Prosurv CE HPC” in your list of programs to add or remove.

Be sure that the Prosurv LLC Prosurv CE HPC file is checked, and that the “Install program into the default installation folder” is also checked. **Then click OK.**

During the Installation, you will see the progress Bar as shown here.



Prosurv CE Installation and Quick Start Guide for Allegro CE



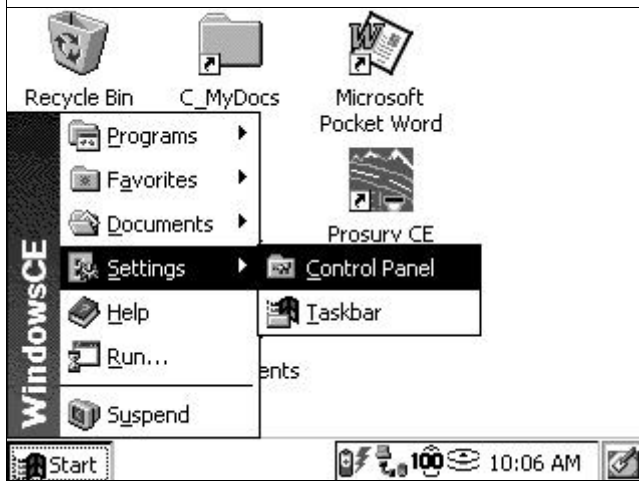
After the PC has finished installing to your Allegro, the Allegro's own installer will take over and complete the installation process automatically.

A shortcut to run Prosurv CE is provided for you on the Allegro's desktop.

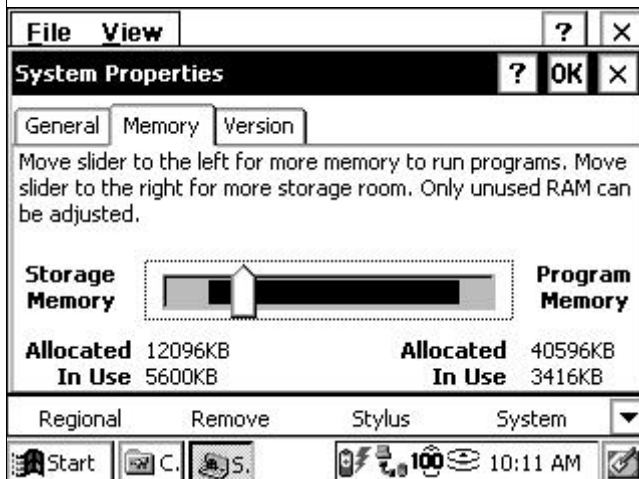
You can also access (run) Prosurv CE from the Start—>Programs Menu.

Step 4: Allegro Changes

1. Increase Program Memory



Go to Start—>Settings—>Control Panel, then double-tap the System icon.

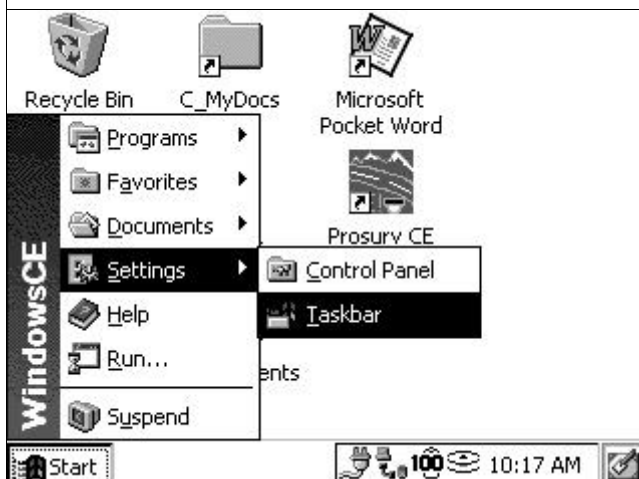


Select the Memory tab and slide the vertical slide bar towards the left, so that Program memory has at least 40000KB (~40MB RAM).

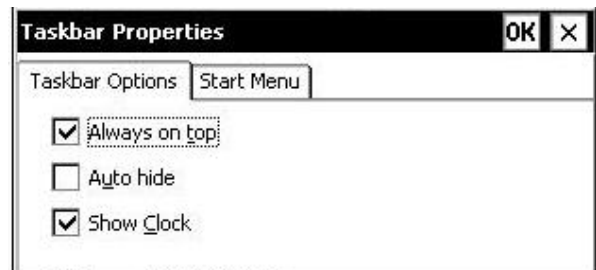
By default, your Prosurv Jobs will be stored to the C_Drive folder of your Allegro CE (a non-volatile storage area). So, you don't need to worry about Storage Memory in the device RAM (though you should leave some available).

Press OK, then tap the X in the upper right corner to go back to your Allegro's desktop.

2. Hide the Taskbar



Go to Start—>Settings—>Taskbar, then checkmark the Auto hide box.



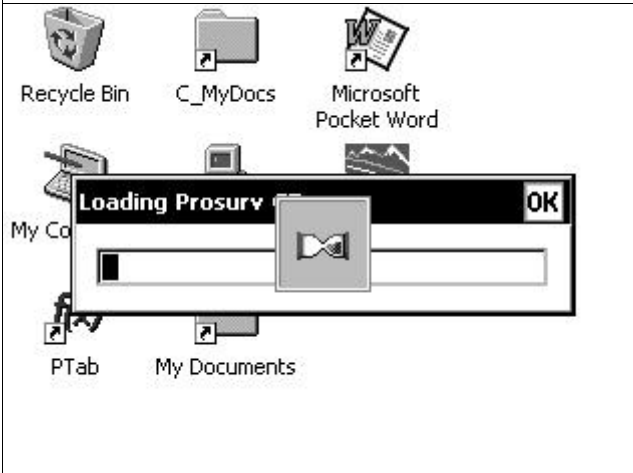
Prosurv CE Installation and Quick Start Guide for Allegro CE

Prosurv CE utilizes the entire 320x240 screen available on the Allegro CE. By setting the Taskbar to Auto-hide, you ensure that all Prosurv CE screens are completely visible.

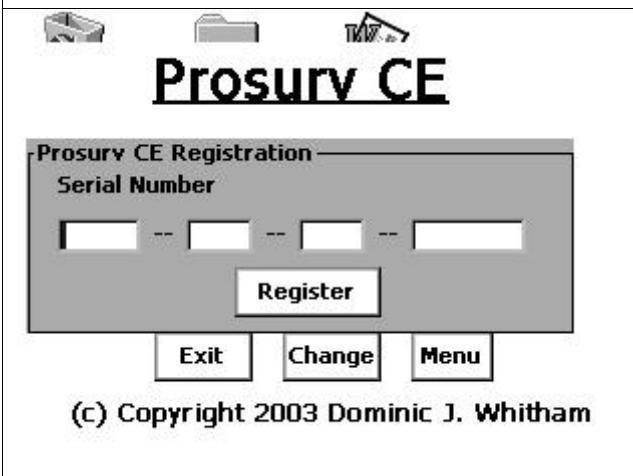
Tip: To switch between a running application (such as Prosurv CE) and your Allegro's desktop, you can make the Taskbar pop-up by *holding* the **Blue** key and pressing the Start key (located above the **Yellow** key) on the Allegro's keyboard.

You're now ready to run Prosurv CE!

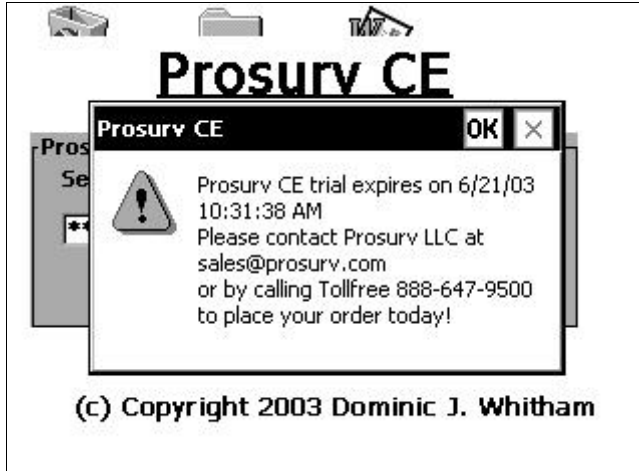
Running Prosurv CE for the First Time



Double-tap the Prosurv CE HPC icon on the desktop. A progress bar will display that Prosurv CE is loading.

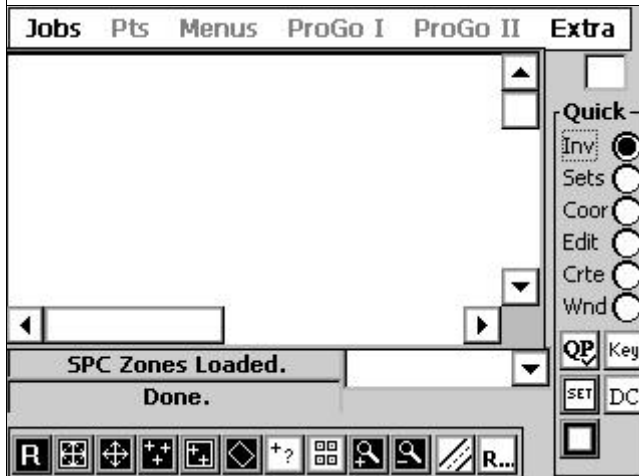


You will be asked to enter your Prosurv CE Registration number. Type in your Registration Key *exactly*, and then tap the Register button.



If you have been issued a trial version of Prosurv CE, you will see a notice, like the one shown here, each time you start Prosurv CE. After the trial period, Prosurv CE will no longer run and a new full Registration Key will be required.

Tip: Prosurv CE will now continue loading. It may take up to 40 seconds for Prosurv CE to finish loading.

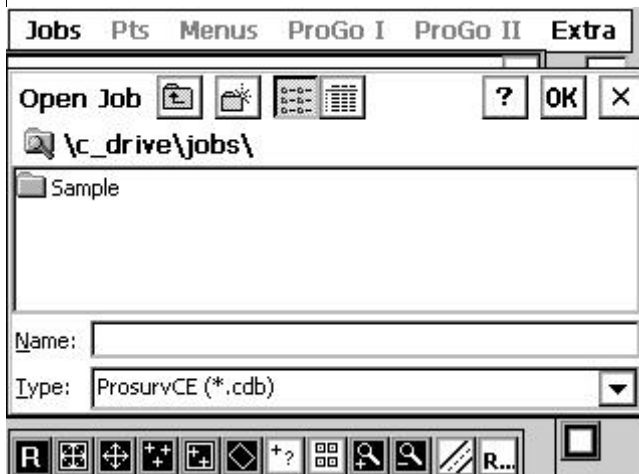


You will now see the main Prosurv CE screen as shown here.

Tip: Most of the Main Menu will not be accessible until you create or open a Prosurv CE Job.

If you see the Sample.cdb file in your extracted files, please follow the example below. Otherwise, you can create a new job in Prosurv CE by going to Jobs—>New Job.

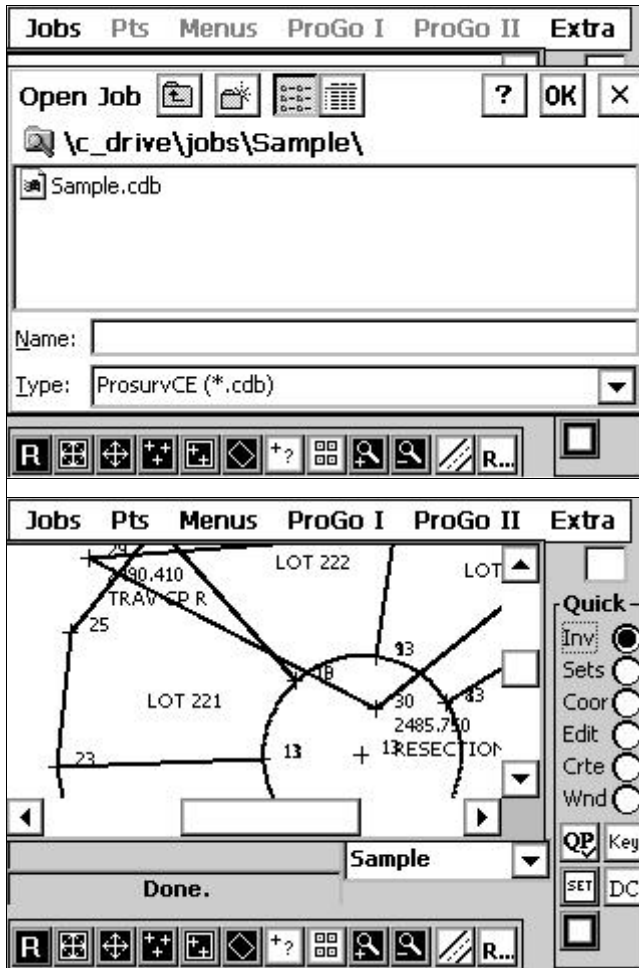
A Sample Job



If a sample job has been included with your zip files, you should:

1. Use ActiveSync to create a new folder on your Allegro:
 - On your PC, tap the Explore button in the ActiveSync window.
 - Double-click My Computer
 - Double-click C_Drive
 - Double-click the Jobs folder
 - Right-click and create a new folder called "Sample"

Prosurv CE Installation and Quick Start Guide for Allegro CE



2. Drag and Drop or Copy/Paste the Sample.cdb job file into the new folder, so the path on the Allegro to the job is **\C_Drive\Jobs\Sample\Sample.cdb**
 - Tap OK if a window pops up during the copying of the file
2. Select Jobs—>Open Job from the Prosurv CE Main Menu.
3. You will see the Sample folder as shown on the previous page. Double-tap the Sample folder.

Double-tap the Sample.cdb job file to load the job.

Tap Yes to the Regen question, then scroll down and to the right to view the plotted subdivision.

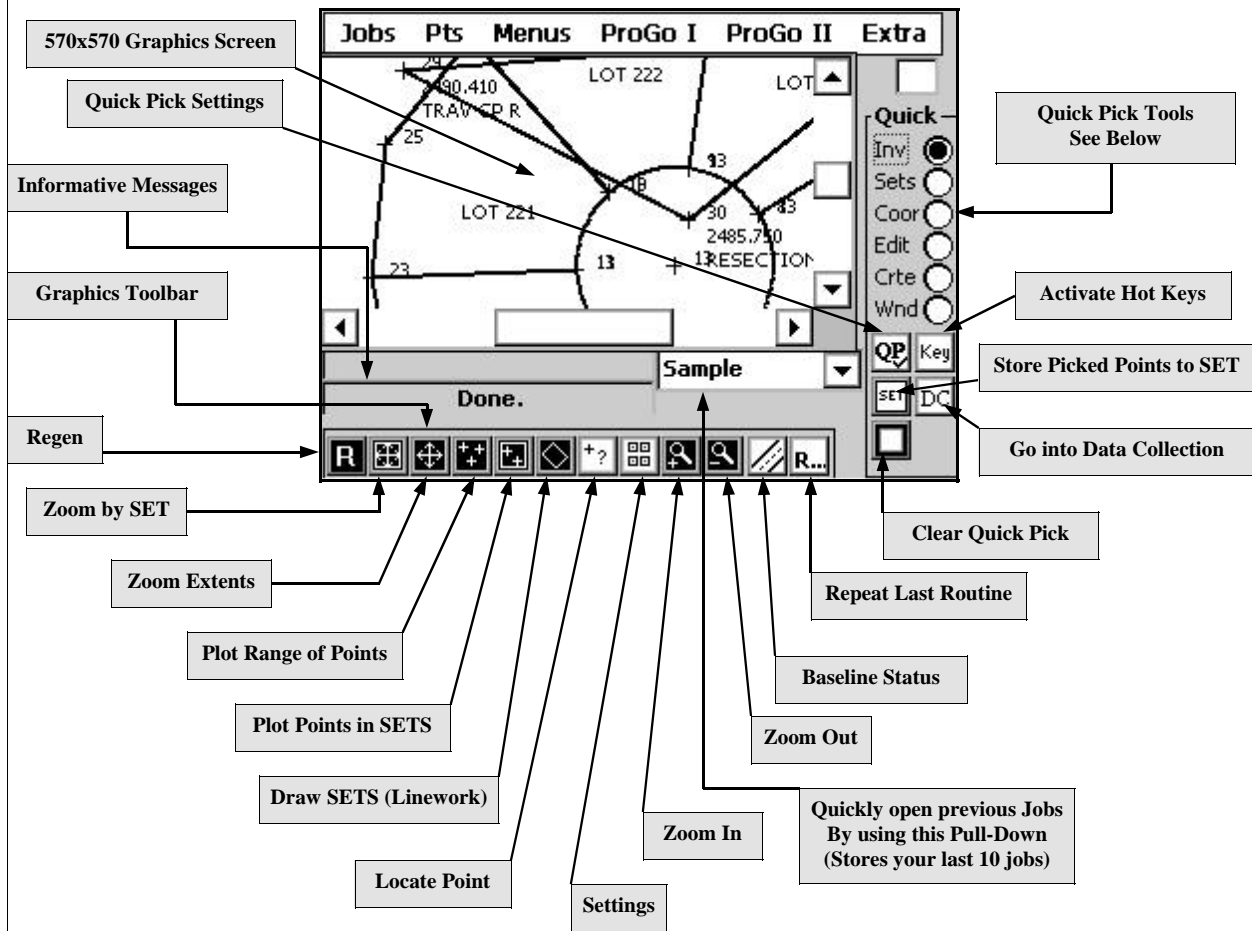
The Sample job is now ready to go!

Tips and Techniques for using Prosurv CE

- All jobs default to storing in the \C_Drive\Jobs folder on the Allegro. When you create a new job, a folder will be created for you with that job name. So, if you create a New Job called “MyJob”, then you will find the file in \C_Drive\Jobs\MyJob\MyJob.cdb. The default folder is user-definable by changing it in the *ProsurvCE_Defaults.txt* file which is located in \Program Files\Prosurv CE HPC\ on your Allegro. Refer to Appendix B of the *Surveying With Prosurv CE* manual for more information.
- The *ProsurvCE_Defaults.txt* file also contains default information for your instrument, digital level, and com port. Your installation files may have come pre-set with the Leica Robotic 1100 series as your default instrument, and the Leica DNA model Digital Level as your default digital level. You can find other instrument definitions in Appendix B of the user manual, or you can simply change the instrument selection in Data Collection under Instruments, which only affects the current job.
- You can create up to 2000 pre-defined SETS of points using the powerful Sets routines. A SET is simply a point list such as 5.25,12000,12052,32 and can contain up to 500 points. You can create sets by point #, description, and even by radius from a point (and much more). Then, you can Inverse around a SET, Stakeout a SET, Export a SET, Plot a SET, and more.
- Your best source of information about the routines in Prosurv CE is our *Surveying With Prosurv CE* manual, which can be downloaded, by chapter at our web site. The Password for viewing the chapters in Adobe Acrobat is PN8133 (use capitals). Each full version of Prosurv CE comes with a hard-copy of the user manual.

Please feel free to call Prosurv LLC, toll-free at 888-647-9500 if you have any questions about the installation and use of Prosurv CE Data Collection.

Prosurv CE Quick Start Guide The Prosurv CE Main Menu



Quick Pick Tools

- **Inverse**—Quickly inverse between two points by tapping them. Other methods of Inversing are to view an Inverse Report, or use the Data Collection 3D Inverse routine.
- **SETS**—Stores selected points into a new SET for easy graphics plotting (ie Draw SETS), stakeout out of points, Inverse Reports and more. Routines with the “Include #’s” text box can accept pre-defined SETS of points by typing an underscore _ and the SET #, for example, to Stakeout SET # 25, just enter _25
- **Coordinates**—View the coordinates of any tapped area of the screen (does not display closest point’s coordinates)
- **Edit**—Edit any tapped point
- **Create**—Create new point instantly. Tapped area yields rough coordinates that are stored as a new point. Use this to fill in missing topo areas by staking the tapped point and shooting it’s elevation. Select Instant Save from the Auto Point routine to store points instantly as you tap, without viewing the coordinates.
- **Window**—Window in to an area by tapping two opposite corners of a “rectangle”.

Prosurv CE Quick Start Guide

The Prosurv CE Data Collection Menu

Elev	Rvw+	Collect	Stk	Special	FCodes
Backsight					
Instrument					
B5 Az, Dist, & HI					
P#		29		30	297°32'23"
N	10099.2000		10023.6000		163.507
E	9861.7091		10006.6891		5.250
Z	2490.410		2485.750		2491.000
FC	TRAV CP R		RESECTION		
North		0.0000	Elev	0.000	
East		0.0000	Desc		
Next # = 1			Job: Sample - Data		

Top Toolbar

- Bring Elevation From Benchmark
- Temperature, Pressure, Scale Factor
- Review Raw Data
- Enter a Note
- Keyboard Entry (Add New Point)
- Setup
- Topo/Sideshot
- Resection (2 & 3 Point)
- Start Project (Using Bg/Az to BS)
- Stakeout (Radial Staking of Points)
- Stake Alignment

Bottom Toolbar

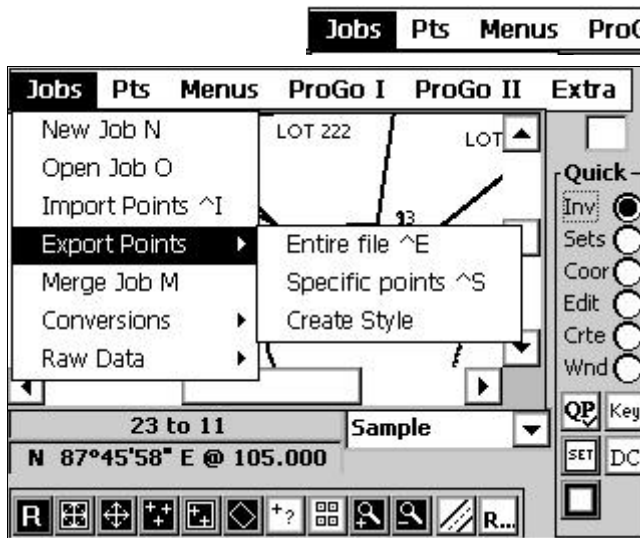
- Stake to a Line 2D or 3D
- Stake to a Curve 2D or 3D
- 3D Inverse of two points
- Traverse by Closing the Horizon
- Auto-Draw Settings
- Feature Code Settings
- Refresh Info Screen
- Exit Data Collection
- View Plot Screen while in DC
- Activate Hot Keys
- Robotic Parameters and Control

Viewing the Plot Screen while in Data Collection

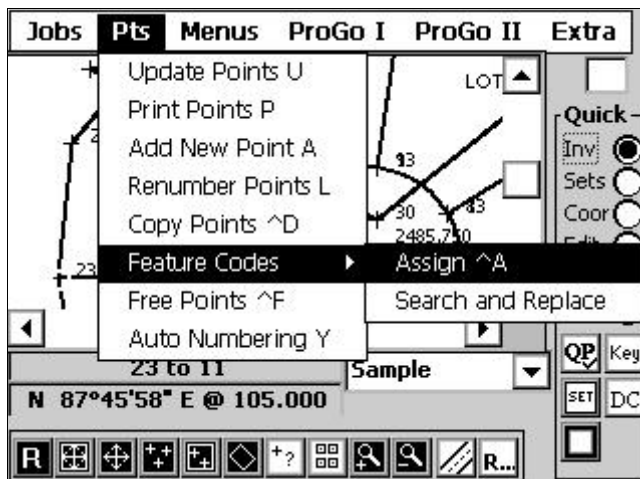
- Tap the Plot button while in Data Collection to see the plot screen and access the Quick Pick and plotting functions. The info screen will disappear, and the Plot button will appear under the DC button on the main screen. Tap the plot button to toggle back to viewing the info screen.
- You'll notice that, although you're viewing the plotting screen, the Menu is still the full Data Collection menu. However, if you scroll the graphics, pick a QP function, or tap the screen, the Menu will disappear, leaving you with a disabled Main menu instead. Simply tap the DC button to re-activate the Data Collection Menu without leaving the Plotting screen.

Prosurv CE Installation and Quick Start Guide for Allegro CE

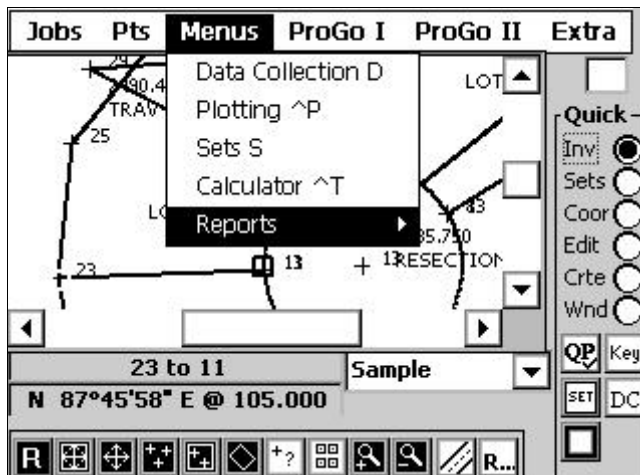
Where to Find Routines in the Main Menu



- Create and Open Jobs
- Import / Export points
- Merge points from other jobs (ie bring in control points from a control point job)
- Import NGS Datasheets (creates points)
- Convert and Re-compute your Raw Data

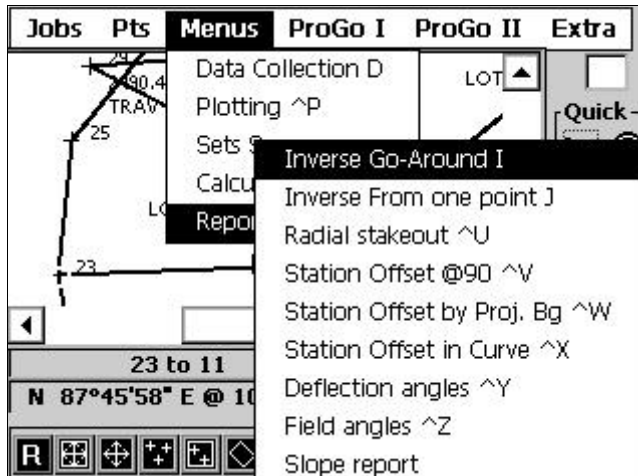


- View/Edit/Find/Delete points
- Print Numeric point list to screen
- Add New Points
- Renumber/Copy points
- Assign or Search & Replace Feature Codes
- Check your available (free) points
- Set Auto # and Instant Save



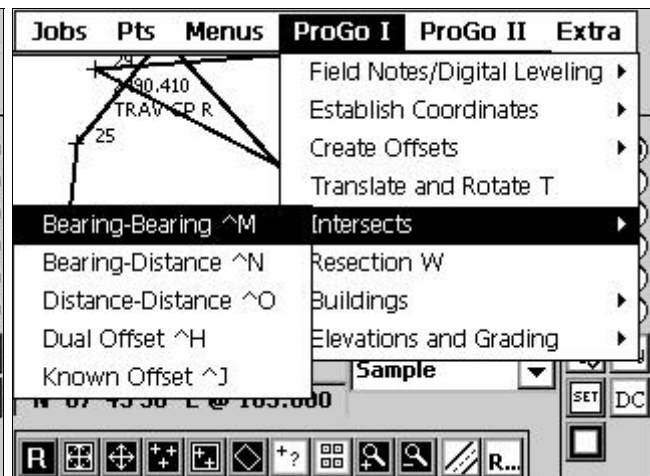
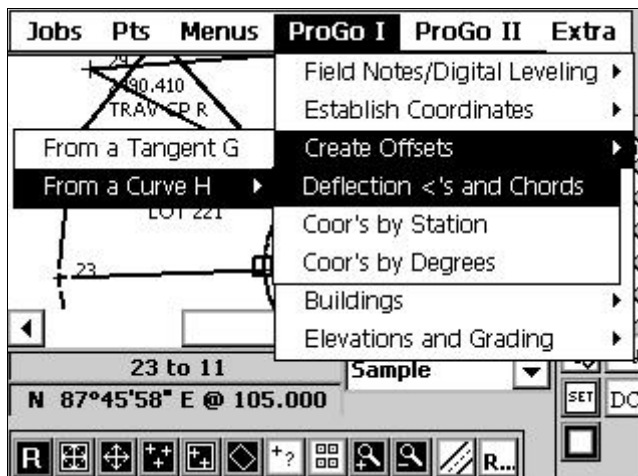
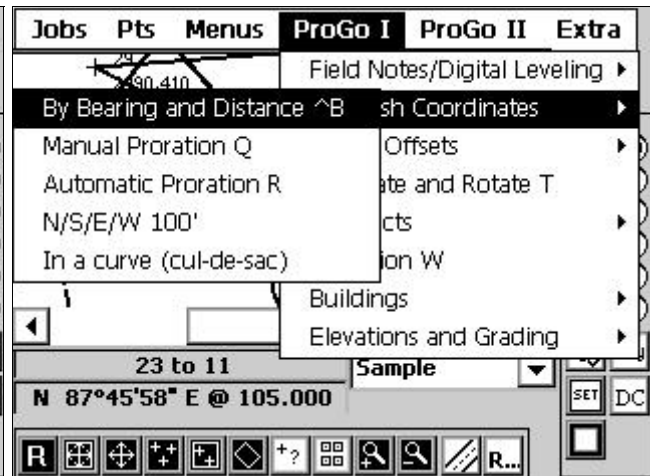
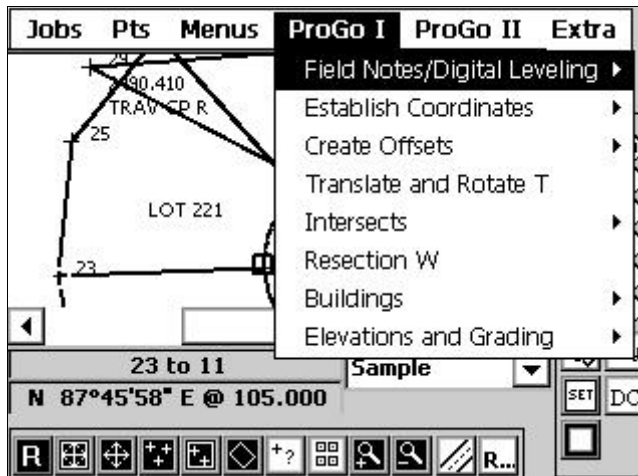
- All other menus in one location
- Go to Data Collection
- View the Plotting menu
- Create/Edit/View SETS of points (definable point lists)
- Use the built-in Prosurv Calculator
- View 9 different types of Reports

Prosurv CE Installation and Quick Start Guide for Allegro CE

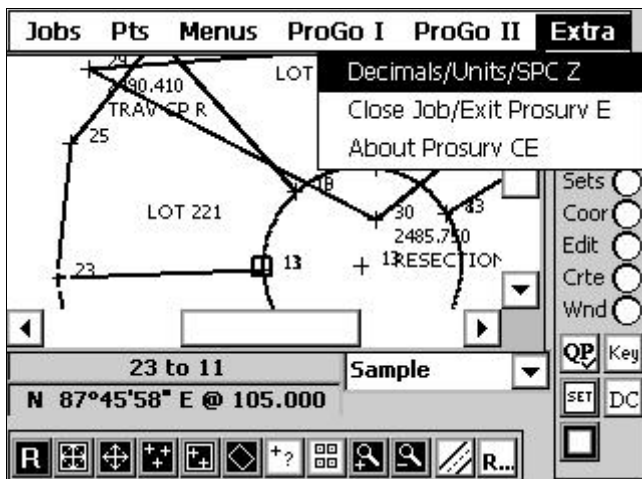
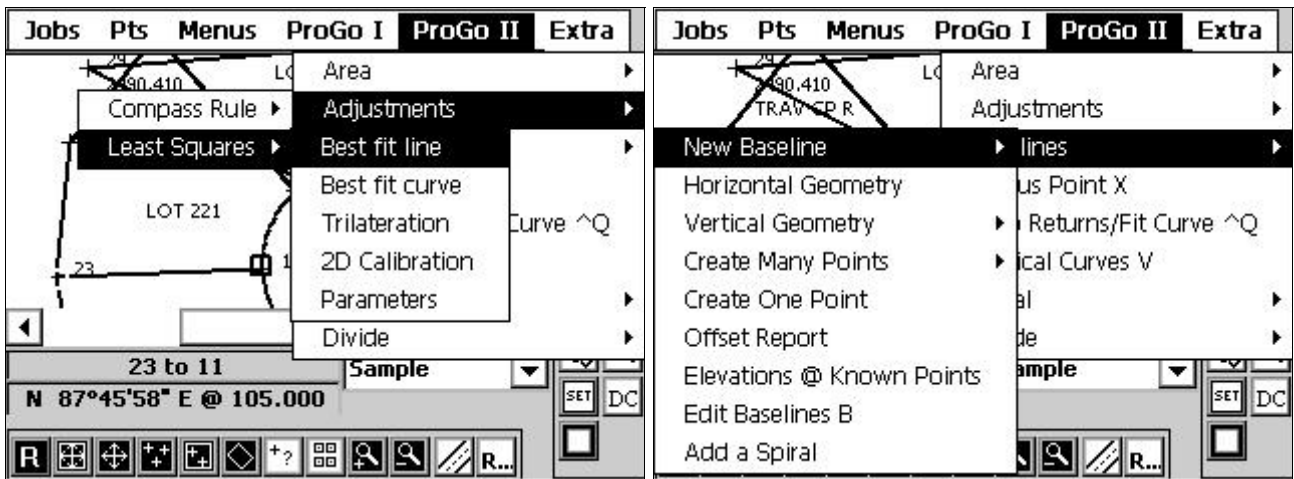
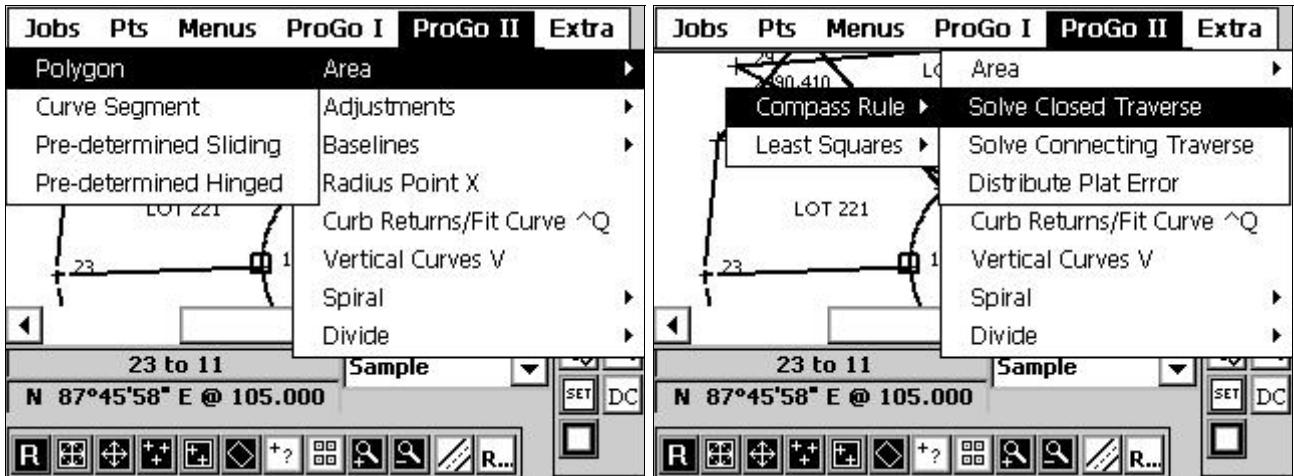


- 9 Different Reports
- Up to 500 points per report
- Save reports as text files or view on-screen

All Coordinate Geometry (ProGo) functions are found under two pull-downs



Prosurv CE Installation and Quick Start Guide for Allegro CE



- Set your Decimals and Units
- Select a SPC Zone or UTM Zone
- Close the Job **and exit Prosurv CE**
- View the current version of Prosurv CE

Prosurv CE Installation and Quick Start Guide for Allegro CE

Where to Find Routines in the Data Collection Menu

Elev	Rvw+	Collect	Stk	Special	Fcodes
------	------	---------	-----	---------	--------

Elev	Rvw+	Collect	Stk	Special	Fcodes
On/Off V		Instrument	BS Az, Dist, & HI		
Bring B	29	30	297°32'23"		
Adjust Tgt Ht	00	10023.6000	163.507		
Volumes	91	10006.6891	5.250		
	10	2485.750	2491.000		
FC	TRAV CP R	RESECTION			
North	0.0000 Elev	0.000			
East	0.0000 Desc				
Next # = 1		Job: Sample - Data			

- Elevations On/Off
- Bring Elevation from Benchmark
- Adjust Blown Target Heights
- Compute End Areas & Volumes

Elev	Rvw+	Collect	Stk	Special	Fcodes
		Temp/Press/SF ^Y	ent	BS Az, Dist, & HI	
P#		Review Raw R	30	297°32'23"	
N		Note N	6.6000	163.507	
E		Auto # A	6.6891	5.250	
Z		Key In X	5.750	2491.000	
FC		CTION			
North	0.0000 Elev	0.000			
East	0.0000 Desc				
Next # = 1		Job: Sample - Data			

- Set Temperature, Pressure, and Scale Factor
- Review Raw Data at any time
- Enter Notes
- See Available point numbers/set auto point
- Key In coordinates (Add new points)

Elev	Rvw+	Collect	Stk	Special	Fcodes
		Backsight	Setup S	BS Az, Dist, & HI	
P#				297°32'23"	
N	10099.	Take Shot T		163.507	
E	9861.	Resection E		5.250	
Z	2490	LS Resection		2491.000	
FC	TRAV	Start Project J			
		Remote Point ^P		0.000	
North					
East		0.0000 Desc			
Next # = 1		Job: Sample - Data			

- Perform a new Setup (BS/Instrument/HI)
- Take Shot (Topo/Sideshot/X-Sections)
- 2 or 3 point Resections
- 13 point Least Squares Resections
- BS using Bearing / Azimuth and place coordinates on backsight automatically/ Perform automatic Setup (Start Project)
- Shoot a hanging wire without a prism giving true 3D coordinate of point by using two previous shots (ie power poles on either side of a highway, then shoots hanging wire with angle only shot).

Prosurv CE Installation and Quick Start Guide for Allegro CE

Elev	Rvw+	Collect	Stk	Special	Fcodes
		Backsight	Ins	Radial Stake K	HI
P#	29			Stake Line L	3"
N	10099.2000			Stake Curve C	07
E	9861.7091			Stake Align ^B	50
Z	2490.410			Stake Catch Point P	00
FC	TRAV CP R			Slope Offset	
North		0.000			
East		0.0000	Desc		

Next # = 1		Job: Sample - Data	

All Staking routines under the Stk pull-down.

Elev	Rvw+	Collect	Stk	Special	Fcodes
		Backsight	Instrument	3D Inv F	HI
P#	29			Traverse M	3"
N	10099.2000		10023.6	Instruments I	07
E	9861.7091		10006.6	Parameters Q	50
Z	2490.410		2485.6	About DC ^A	00
FC	TRAV CP R		RESECT	Comm Port	
North		0.0000	Elev	Exit C	
East		0.0000	Desc		

Next # = 1		Job: Sample - Data	

- 3D Inverse
- Traverse by Closing the Horizon
- Instrument/Timeout/Com Port Settings
- Other Parameters
- About Prosurv Data Collection
- Comm Port settings (overrides default instrument settings)
- Exit Data Collection

Elev	Rvw+	Collect	Stk	Special	Fcodes
		Backsight	Instrument	Load C Codes G	HI
P#	29			Load F Codes H	3"
N	10099.2000		10023.6	Auto-draw ^F	07
E	9861.7091		10006.6	Quick Codes ^Q	50
Z	2490.410		2485.6	Edit Quick Codes	00
FC	TRAV CP R		RESECT		
North		0.0000	Elev		0.000
East		0.0000	Desc		

Next # = 1		Job: Sample - Data	

- Load Control Codes (ie Begin Line, End Line)
- Load Feature Codes
 - Unlimited # of codes
 - Imports text file list
 - Easily create in Excel and save as .csv
 - Numeric lists supported
 - Nebraska code list included, or contact Prosurv for your State's list
- Auto-draw and Quick Codes settings
- Edit Quick codes